

Board of Trustees

Special Meeting

August 8, 2024

Agenda

- Call to Order
- Roll Call
 - Attendance by Other Means/Virtual – Roll Call Vote
- Pledge of Allegiance and Mission Statement
 - Connect Transit provides safe, reliable transportation and access to opportunity to strengthen and enrich individual lives, our community, the economy, and the environment.
- Public Comments

Consent Agenda

- Approval of Regular Session Minutes for June 25, 2024
- ~~Approval of Financial Information for May 2024~~ – *delayed due to year end closing*
- Approval of Statistical Reports for June 2024
- Cardinal Infrastructure Federal Report
- Cornerstone – Illinois Weekly Update

- Roll Call Vote

Committee Reports

Finance Committee:

Trustee Singer
Vice Chair Hile

Operations & Planning

Committee:

Trustee Foster
Trustee Rao

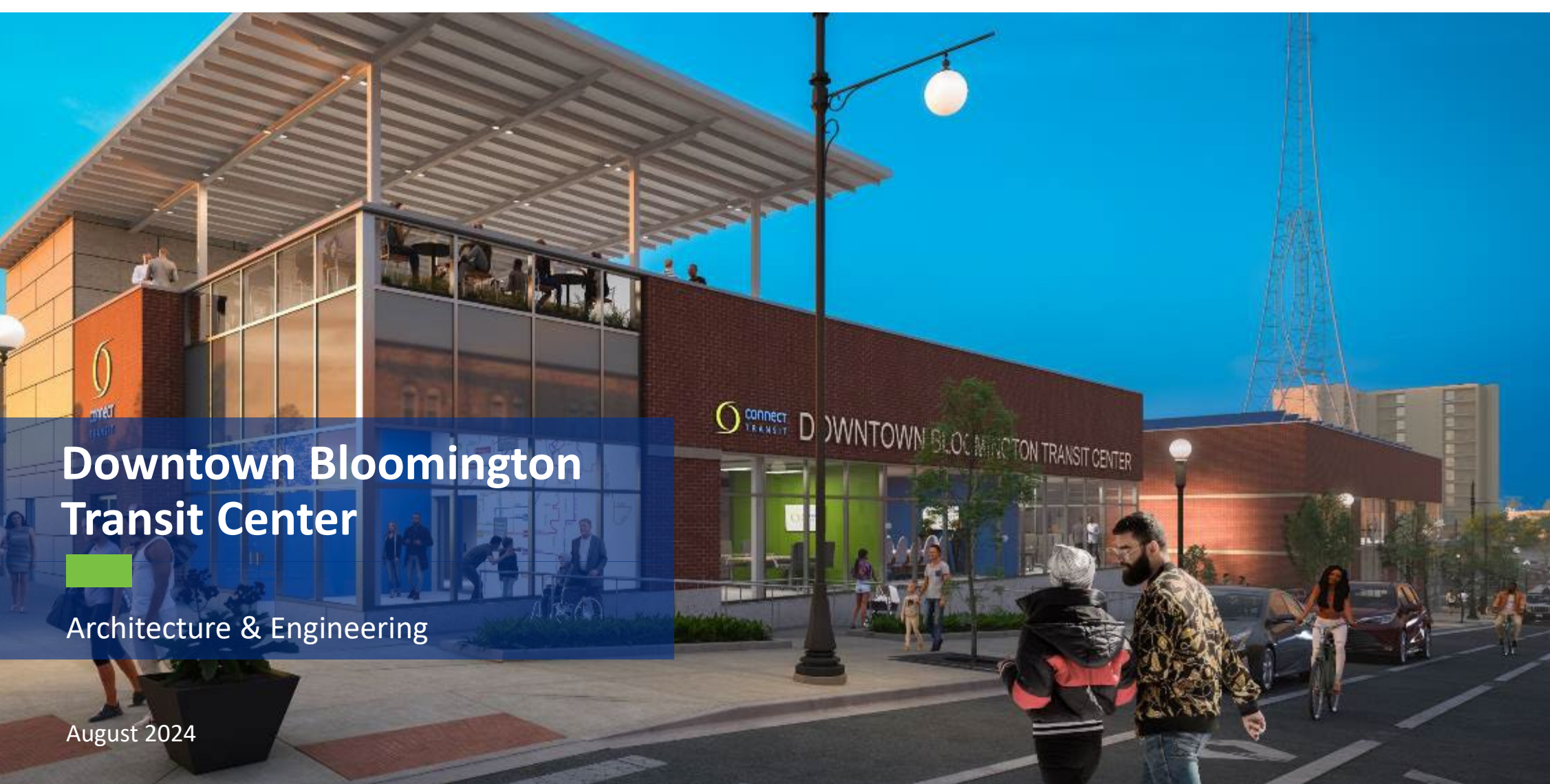
Marketing & Communications

Committee:

Trustee Buchanan

New Business

- Recommendation to Support Library Card Sign Up Month/September 2024 – Roll Call Vote
- Recommendation for *Managed Printer & Copier Services Contract Award* – Roll Call Vote
- Recommendation for *Architect and Engineering Contract Award* – Roll Call Vote



Downtown Bloomington Transit Center

Architecture & Engineering

August 2024

Chris Martel, PE
Senior Vice President



Introducing CDM Smith

Founded in **1947**

+ Employee owned

15

Offices in Illinois



135+

Offices World-wide

6,200+

Employees

\$1.2B

In Annual Revenue



OUR RESOURCES



All engineering and construction services under **ONE** roof.



SIX full-service design-build centers, including Chicago, IL



Your Trusted Team

CDM Smith



DESMAN

With Proven Disadvantaged Business Enterprises (DBE)





Principal-in-Charge

Chris Martel, PE, PMP, BCEE, LEED AP

Project Manager

Matt Aklan, PE, PMP

Technical Advisors

Ben Harber, AIA, NCARB, LEED AP, PMP

Tim King, AIA, LEED AP

QA/QC

Mandeera Wagle, PE, PMP

Facility Design

Sarah Sutherland, AIA, LEED AP ☆

Technology Expert

Jessie Carroll, PE, PTOE, PMP

Architecture

Lee Lohman, AIA, LEED AP

Structural

Derek Boeldt, SE, PE

Electrical

Ted Kloba, PE

Mechanical/Plumbing

April Ricketts, PE, CPD, LEED AP

Fire Protection

Jarron Gass, PE, CFPS

Vertical Circulation

Bob Cheval, AIA, NCARB, LEED AP, PMP

Photovoltaic/Solar

Jeff Donaldson, PE, PMP

Site Design

Brandon Lott, PE, CFM, LEED AP ☆ ●

Utility Coordination

Greg Connor ●

Timothy Sutyak, EIT, LC ●

Streetscape/Landscape

Jeff Martin, PLA ●

Roadway

Katherine Mulvey, PE ●

Tony Cerda, PE

Maintenance of Traffic

Robert Markunas, PE, PTOE ●

Soil/Haz Management

Abby Mazza, PE

Parking Consulting

Steve Rebora, RA, NCARB ☆ ●

Parking Functional Design

Jeff Henriksen, RA, NCARB ●

Parking Access Revenue Control Systems (PARCS) Analysis

Jerry Salzman, AICP ●

Wayfinding/Signage

Chit Manas ●

Communications

Elaine Stryker

EV Charging

Mike Kahn, PE

Robert Lutz, AIA ●

Transit Opt. + FTA Coord.

Steve Hands, PMP, CMQ/OE ☆

Customer Experience/Amenities/Wayfinding

Jessie Carroll, PE, PTOE, PMP

Architecture

Ben Harber, AIA, NCARB, LEED AP, PMP

Transit Communications and Technologies

Elaine Stryker

Transit Zero Emissions

Mike Condei, PE, PMP

Safety, Security, Threat, Vulnerability

Bianca Martinelli

Funding Support

Jacki Murdock, AICP

Construction Administration

Anas Alkhatib, PE ☆

Civil/Site Construction Inspection

Sami Daniel, PE

Electrical Power Coordination

Mike Kahn, PE

Building Inspection

Arsenis Hadjiagapiou, PE

Structure Inspection

Brandon Diffenderfer, PE, SE, PMP

Project Controls

Jared Wendorf, PE, PMP

Additional Support Services

Cost Estimating/Schedule

Ramesh Nair ●

Alternative Delivery

Steve Hands, PMP

City Permitting/Coordination

Chad Frankeberger, Assoc. AIA ●

Real Estate/Market Study

Julia Kirsch ●

Historic Preservation

Tracy Nelson

Survey

Brent Bazan, PLS ●

Constructability

Yury Swetin, SE, PE ●

IDOT Coordination

Robert Markunas, PE, PTOE ●

Value Engineering

Tom Williams, PE, VMA

Community Outreach

Colin Fleming, AICP

Sustainability

Clarice Sollog, AIA, LEED AP

Drilling/Geotechnical

Umar Ahmad, PE ●

Key Subconsultants

- Farnsworth Group
- DESMAN Parking Consultants

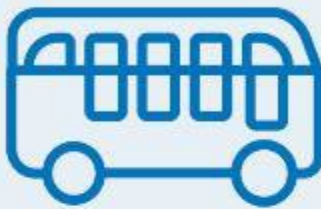
Non Key (DBE) Subconsultants

- Vistara
- NASHnal
- Kirsch-Taylor Consulting

Key

- ☆ Lead

Expertise and Experience for Successful Project Delivery



Optimized Transit Facility Designs



Functional & Safe Parking Garage Designs



Local Bloomington-Normal Presence



Experts in FTA Policies & Process



Long History Serving IDOT



Alternative Delivery Advisor

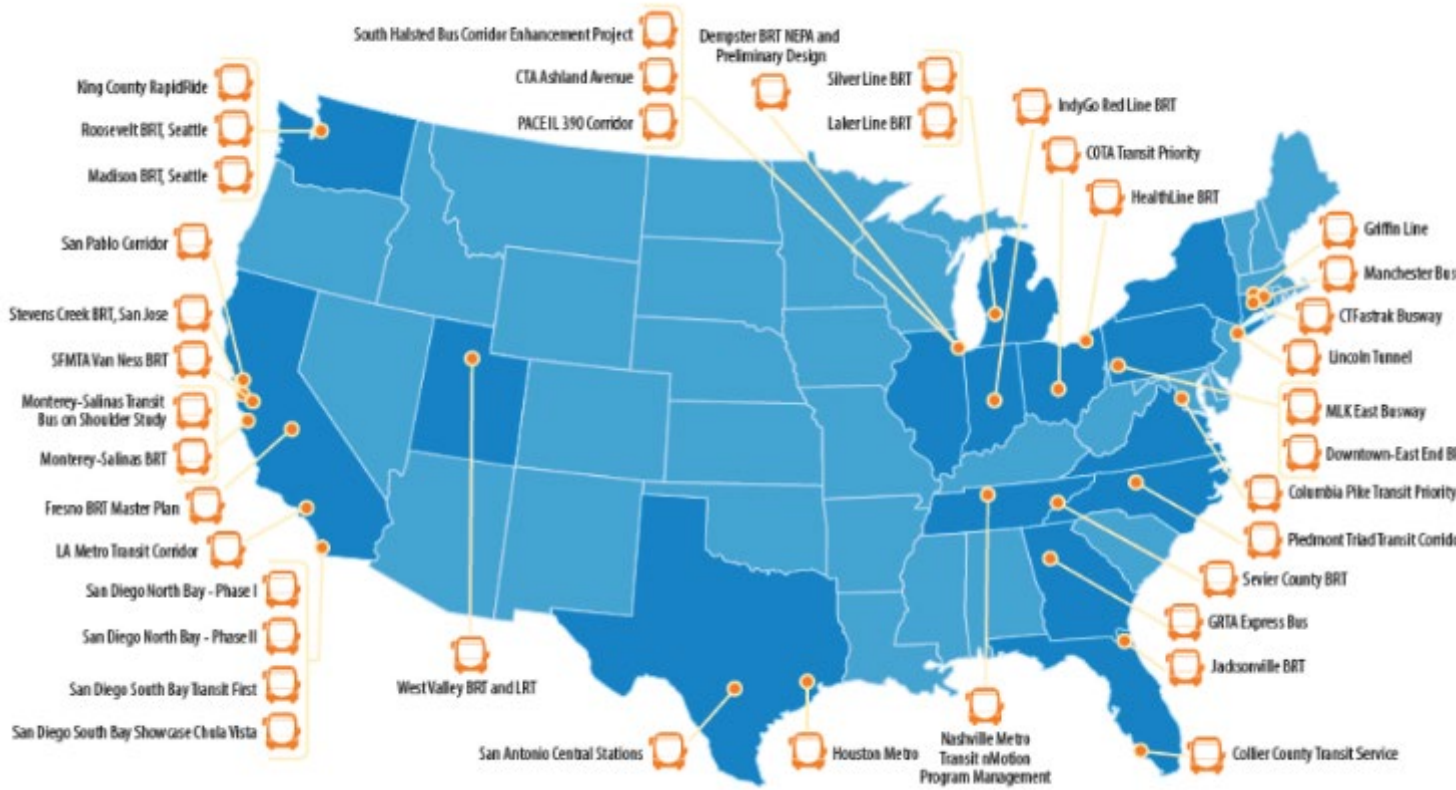


Implementing Practical, Sustainable Solutions

Optimized Transit Facility Design

250

Recent Bus Transit Projects



Functional and Safe Parking Garage Design



5,000+
Parking Garage
Projects.



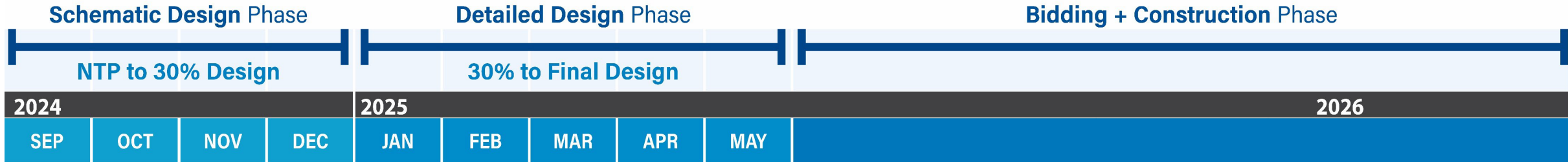
Local Bloomington-Normal Presence

40+

CDM Smith and Farnsworth projects with the City of Bloomington since 2015.



Project Schedule Overview



Collaborative Design Approach

- Ensure Understanding of Project Goals
- Optimize Garage and Bus Layout
- Comply with FTA Requirements
- Align Construction Cost Estimates with Budget
- Connect the Community to the Project
- Major Decisions by 30% to expedite final design



Collaborative Workshop Process

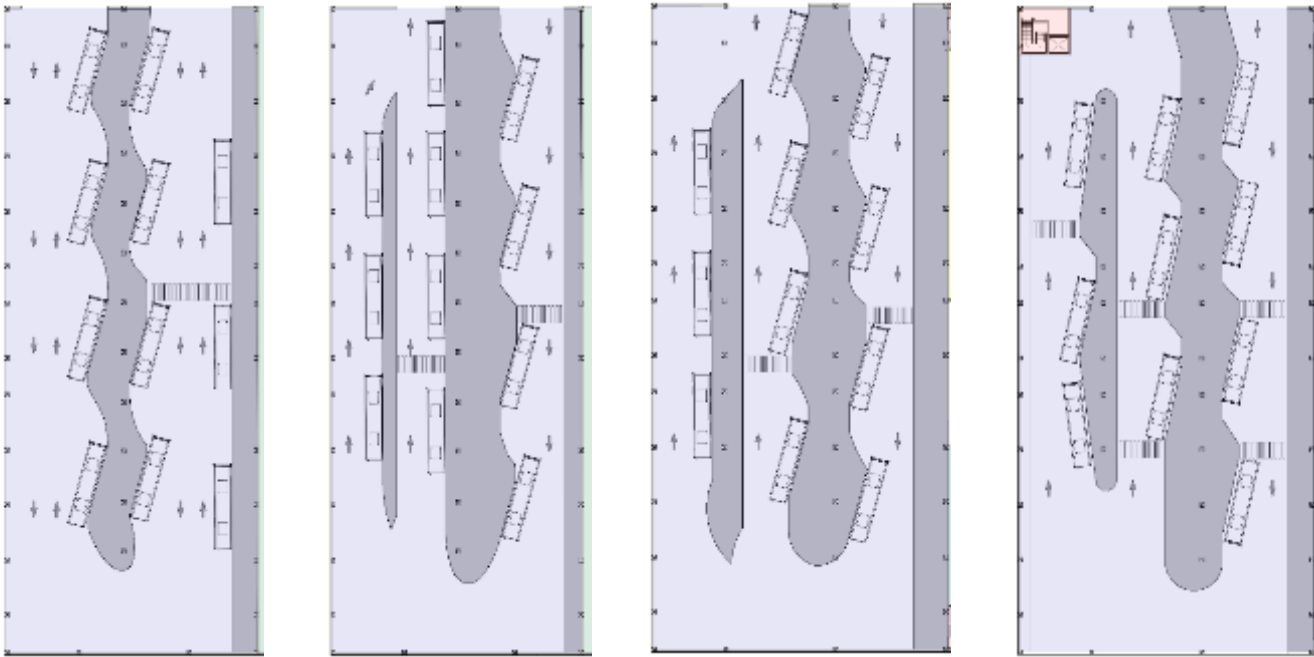
- Project Delivery Method
- Market Analysis
- Bus Routing Analysis
- Transit Center Layout
- Parking Garage Layout
- Sustainability
- Safety and Security
- Accessibility
- Partnerships
- Aesthetic Design Character
- Constructability

In-Person Workshop Process



Bus Transfer Area

- Transit First Approach
- Alternative Layouts to Reduce Cost and Complexity
- Integrating User Experience and Technology

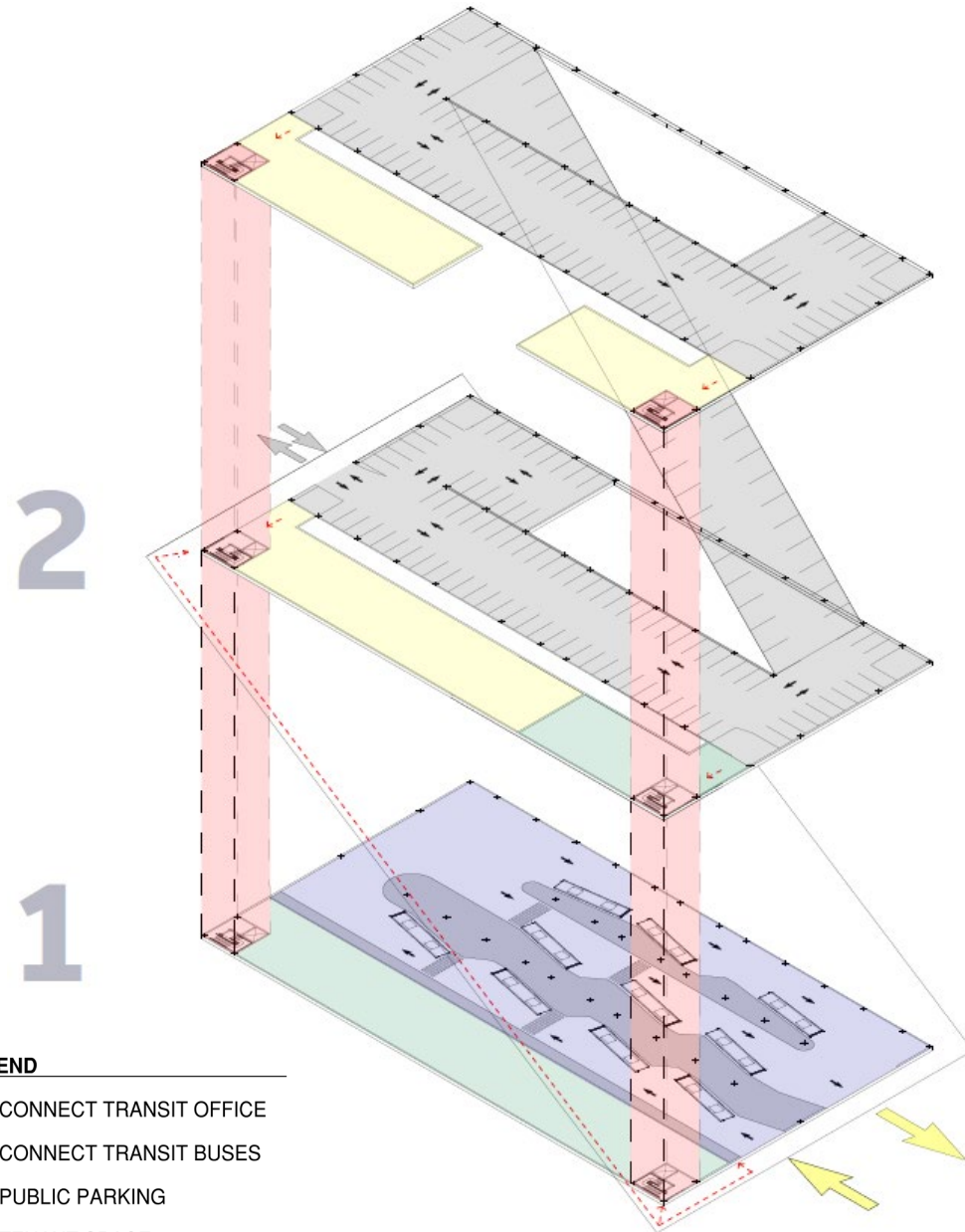


Parking Considerations

- Safe and Inviting
- Circulation and Wayfinding
- Technology
- Efficiency
- Durability



Optimize Design for Transit and Parking



LEGEND

- CONNECT TRANSIT OFFICE
- CONNECT TRANSIT BUSES
- PUBLIC PARKING
- TENANT SPACE
- ELEVATORS

P2

— Bus Transfer

- 1-way traffic with 10 sawtooth bays
- Ideal for bus circulation
- Added cost for transfer beams

P1

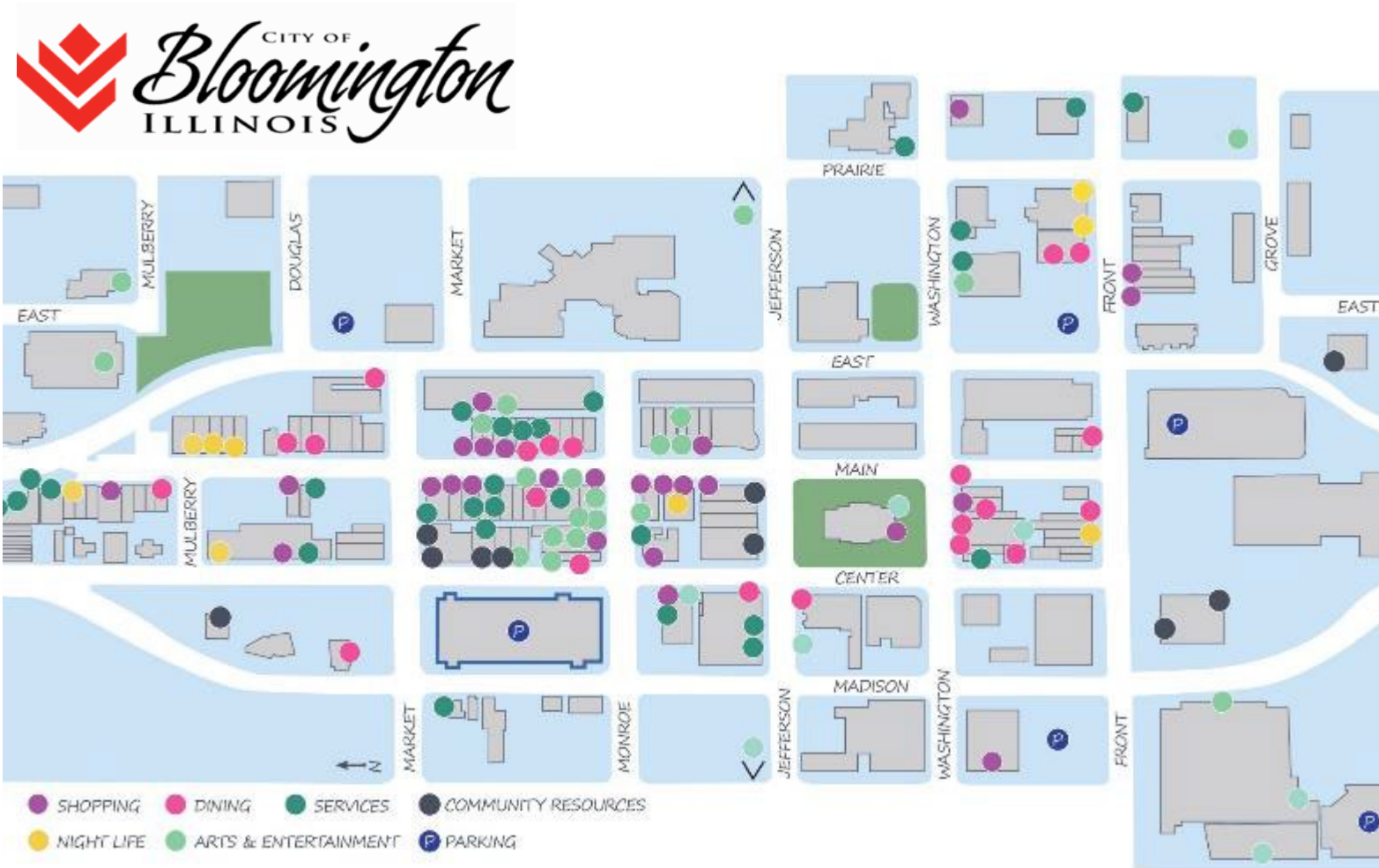
— Parking Layout

- 90-degree 2-way parked ramp
- Up to 250 spaces
- Maximizes parking efficiency

— Liner Building

- 40'W liner building with air and light shaft

Connecting to the Downtown Bloomington Community



- In the Heart of Bloomington Adjacent to Services, Entertainment, Shopping, and Dining
- Catalyst for Downtown Revitalization
- Transit Supportive Design Uses that Benefit Both Riders and Ridership



DOWNTOWN BLOC WILMINGTON TRANSIT CENTER





Level of Effort

| Task | Total Cost |
|---------------------------------|-----------------------|
| Project Management | \$213,838.58 |
| Stakeholder Engagement | \$29,809.21 |
| 30% Design | \$619,900.57 |
| Workshops | \$90,961.01 |
| 60% Design | \$721,402.60 |
| 90% Design | \$558,626.50 |
| 100% Design | \$260,239.54 |
| Bid Support | \$100,933.29 |
| Support Tasks | \$298,240.93 |
| Geotech, Survey, Enviro Testing | \$220,690.00 |
| Misc Other Direct Costs | \$38,000.00 |
| TOTAL | \$3,152,642.23 |

Support Tasks

- Workshops
 - Project Delivery Method
 - Market Analysis
 - Bus Routing Analysis
 - Sustainability
- Public Meetings
- Market Study
- Bus Routing Analysis
- Electric Charging Initiatives
- Funding Assistance
- Acquisition Support





The Right Team for Downtown Bloomington Transit Center

- Local Knowledge and National Expertise

We're excited to get started!

Chairman's Report

Managing Director's Report

Agenda

- Trustee Comments
- Executive Session – N/A

Agenda

- Adjournment
 - Roll Call Vote
- Next Meeting: August 27, 2024
 - Will include a post-meeting Board Orientation Workshop – Media Communication Protocols